

Are you in need of assistance?

Remain calm

Call 1-1-2

Tell them you are in Friesland

Tell them the jetty or buoy number or GPS coordinates

How?

If you need help or witness a crime, call the emergency number 112, even when out on Frisian waters. On land, tell them the street name. On the water, tell them the name of the body of water or waterway and perhaps also your GPS coordinates. The unique Marrekrite numbers are even more helpful. These are posted on the Marrekrite signs and sometimes on jetties as well. 'MarBoeien' (lake buoys) are also scattered throughout Friesland. Emergency services are also aware of these numbers. Have a look and take note of the number when mooring.

In cases of incidents on the water, you can make a difference while waiting for emergency services to arrive. Contact the person in danger, administer first aid if required, and let 112 know whether the situation is under control. This will avoid unnecessary deployment of large emergency response teams.

112 can help save lives
Tell them the jetty number!



Buy a pennant

The management and maintenance of Marrekrite berths costs quite a lot. A large portion of the maintenance budget is funded by our members, the Frisian municipalities and the Province of Friesland. Another key portion is covered by water sport enthusiasts who purchase a Marrekrite pennant.

When you buy a pennant or become a donor, you make a direct contribution to keeping up free berths in the middle of nature. Your contribution goes directly to berth maintenance. Once a year, we announce the fundraising totals from the pennant campaign on our website and over social media.



Pennants are available at various outlets in Friesland, as well as online at www.marrekrite.frl. This site also shows a list of pennant sales outlets and where you can also become a donor.

Large ships

In recent years, Marrekrite has been using a simple method to expand some berths for large ships. This involves installing a large pile mooring ten metres out in the water, and in line with the jetties. This means large ships do not take up so much space at jetties, leaving more room for other vessels. A large ship can be moored to the pile mooring, which only takes up a small part of the jetty. This ensures there are more berths available at a lower price.

Visit our website for a list of all locations with pile moorings for large ships.



Recreation on land

We have long been known for our basic amenities on and around the water. But we are quite active on land as well. We manage and maintain the signs for the cycle and walk junction networks in the province of Friesland, as well as the signs for the National Bike Routes ('LF-routes'). The province, municipalities or landowners are responsible for maintaining bike paths and hiking trails.

Friesland has twice been named best biking region in the Netherlands, based on the Biking Region Quality Monitor of the Dutch Cycling Platform Institute ('Stichting Landelijk Fietsplatform'). In both 2015 and 2017, Friesland earned the full five stars. To defend our title, we are making ample investments in the Frisian cycle and walk junction networks. In recent years, we have made significant strides in modernising the biking network, and in extending the hiking network throughout the province. We are also working to set up more tourist transfer points (so called 'TOP's'). These are specially designated points that are excellent for setting off by foot, bike and/or boat.



recreatieschap
marrekrite

MarBoei: fixed and free

A MarBoei is a plastic buoy with a large eye on top. Just like our other mooring spots, these special Marrekrite moorings are nestled in the most breath-taking scenery in Friesland.

Mooring is quick and easy. You can attach your vessel with a single line. The wind will automatically keep the vessel away from the buoy. The vessel floats behind the buoy with its nose to the wind. This means it is always ready to set off. Just untie the mooring line, cast off, and you're under way. A MarBoei is more than a Marrekrite berth. For those interested, a MarBoei can also be an idyllic anchorage. Visit www.marboei.frl to view all of the poems associated with a MarBoei group. This project is brought to you in partnership with *de Moanne*.

For a current list of 'MarBoeien', please visit www.marboei.frl



Key figures

3500
free moorings at
285 locations

36 km
of jetties and
sheetpile walls

100
MarBoei-Buoys

120
waste containers
at 60 locations

400
donors

840
bike hubs

2800 km
cycle junction network

2000
hiking hubs

3800 km
walk junction network

5
tourist transfer points

Collection of recreational waste

As an added service, we collect recreational waste from a large number of Marrekrite berths. We are happy to do this – to do our part for a cleaner Friesland.

We use a special 'environment boat' to collect recreational waste. This waste collection boat features a large compressor into which the skipper empties the containers. The environment boat typically makes the rounds once a week between 1 April and 1 November to empty every container. The containers remain in place throughout the year, but are locked up on 1 November. After this, they are no longer available for use until they are unlocked on 1 April.

The containers are only intended for recreational waste, i.e. not for small chemical waste or bulky waste. Many Marrekrite berths feature one or more containers, for a total of 120 spread across some 60 locations. Please let us know if a container is unexpectedly full. You can do this quickly and easily on the Marrekrite website.



Marrekrite's mission in Friesland is to

- manage and maintain free berths in the middle of nature
- develop new mooring facilities
- ensure uniform bridge and lock operation
- keep berths accessible with dredging projects
- manage and landscape greenspaces
- collect recreational waste
- develop, manage and maintain networks of land routes

Sewage stations

To keep Friesland's lakes clean, a dumping ban came into force in 2009. Despite this ban, sewage is still being dumped into surface waters. Three sewage stations are now available in Frisian waters under the moniker 'It Húske'. 'It Húske' is a floating sewage station where you can empty your holding tank for free. A toilet is also available. The stations treat the sewage onsite and dump the treated water into the surface water. The system is solar powered, making it self-sufficient and sustainable.

Please note: 'It Húske' cannot accept bilge water.

We inspect the junction networks once a year, but repair reported damage all year round. What if you notice a sign is missing or broken? We will be happy to fix it as soon as possible. Our website makes it quick and easy to report damage to hub signs or LF-route signs.

Volunteers

The Marrekrite recreation association can't run without volunteers. Our volunteers are mostly supervisors and/or pennant sellers. The Friends of Marrekrite ('De Vrienden van De Marrekrite') launched the pennant campaign some years ago. The first pennant was sold in 1987 to raise extra funds for Marrekrite. To this day, volunteers are still highly involved in selling the pennants. Distribution and administrative processing are handled 'in the office'.



With a map showing all the berths!

By boat,
bike or foot



marrekrite
fietsen



marrekrite
varen

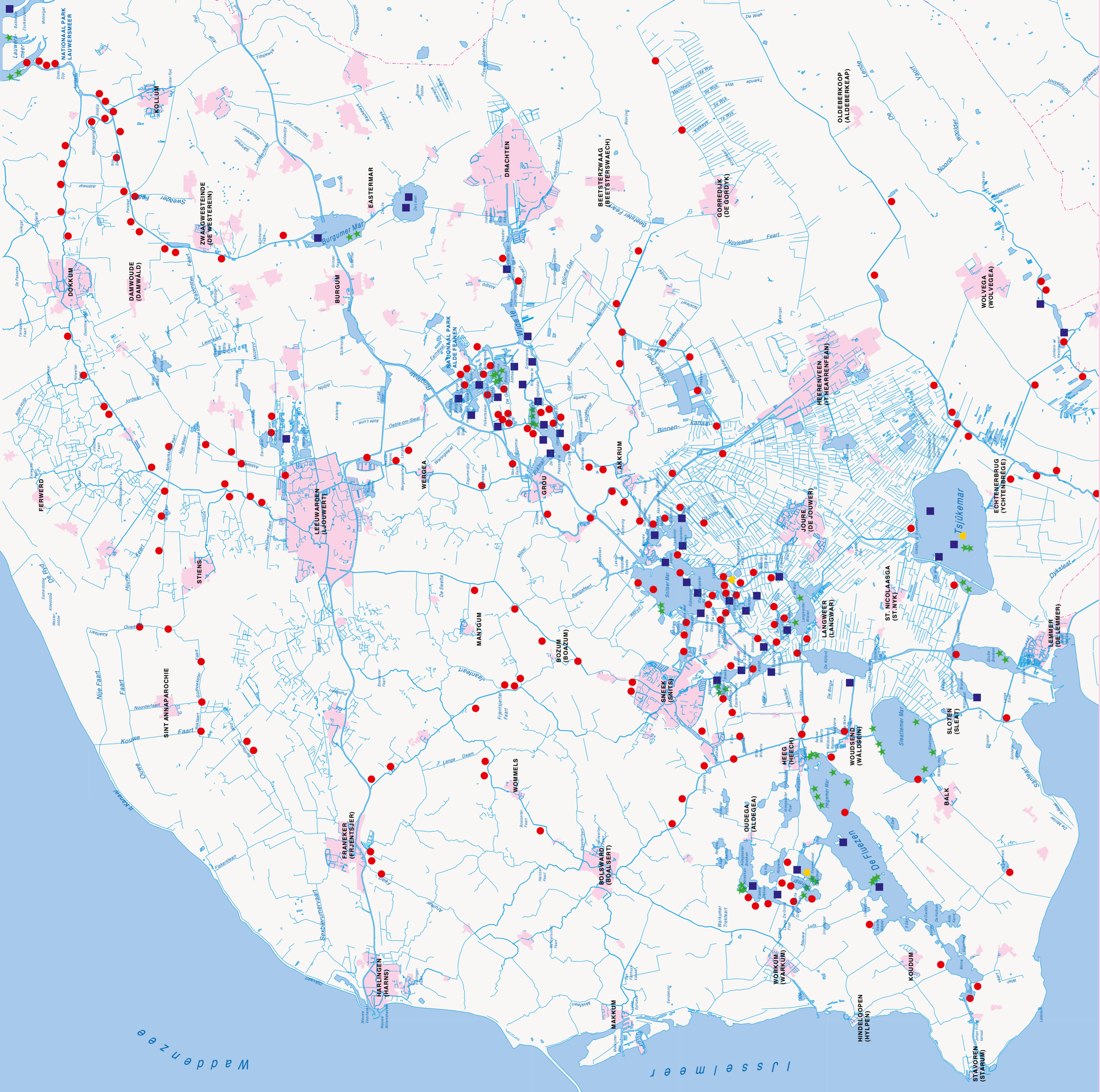


marrekrite
wandelen

Emmakade 87a
8921 AH Leeuwarden

(058) 212 85 81
www.marrekrite.frl
info@marrekrite.frl

KvK 51367033
IBAN NL23 INGB 0000 8895 81



Legend

■ Multiple locations with berths

● Location with berths

★ MarBoei-Buoys

■ It Huske

Scale

1,000 m

Mooring rules

Our berths are located in the middle of the Frisian wilderness. The peaceful and spacious settings are the main attraction of Marrekrite berths. To make everyone's stay at these special berths as pleasant



Respect the land and property of farmers.



Please leave your berth tidy.



Never moor your vessel in reed beds.



Do not use barbecues on jetties or banks.



Keep dogs on leads.



Do not leave vessels unattended for extended periods of time. This is only permitted in a marina or along specially designated shores.



Do not go too fast. Bow waves are a major nuisance to moored boats and are harmful to the shores.



Do not use the waste containers. Do not use them for chemical or bulky waste.



Human and canine excrement must be cleaned up.



Do not cause a nuisance with noise from radios, generators, etc.



Mooring in the same place for over three days is not permitted.



Try to draw up to the berth as much as possible when mooring.



Open flames are not permitted in order to prevent smoke nuisance, flying sparks and forest and peat fires.

as possible, we have a few mooring rules. Not all of the mooring rules are from Marrekrite. Many are prescribed by law.

Important phone numbers

Recreatieschap Marrekrite	+31 58-212 85 81
Emergency	1-1-2
Friesland Police	0900-8844
Water police	+31 343-535 355
Environmental emergency number	+31 58-212 24 22
Province of Friesland (general):	+31 58-292 59 25
Friesland Water Board	+31 58-292 22 22
Swimming safety info line	+31 58-292 56 50

Do you want to report some damage?

If you notice any damage on a berth or on signs for the biking or hiking network, please let us know at www.marrekrite.frl.



Do you need further info?

For lovely boating routes, bike paths and hiking trails in the area, or for further information on Friesland, please visit www.friesland.nl